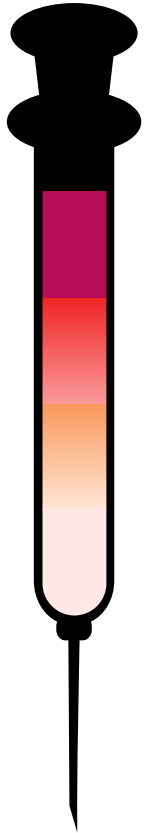
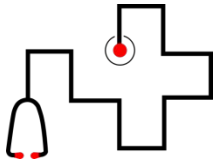


NPS COVID Update

School Committee 1/18/22

Health Office Visits



9682

**Health office visits through
January 13, 2022**

423

COVID Cases to date

2434

Medication doses delivered


90%


Return to class rate

5515

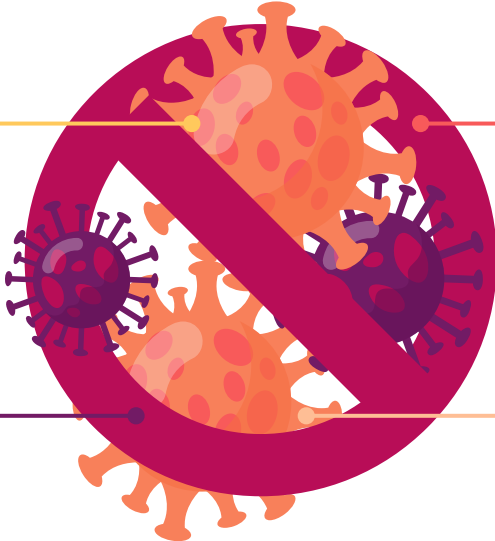
Parent communications


COVID Mitigation Strategies


 **Vaccination #1**

Masks 

 **Distancing**



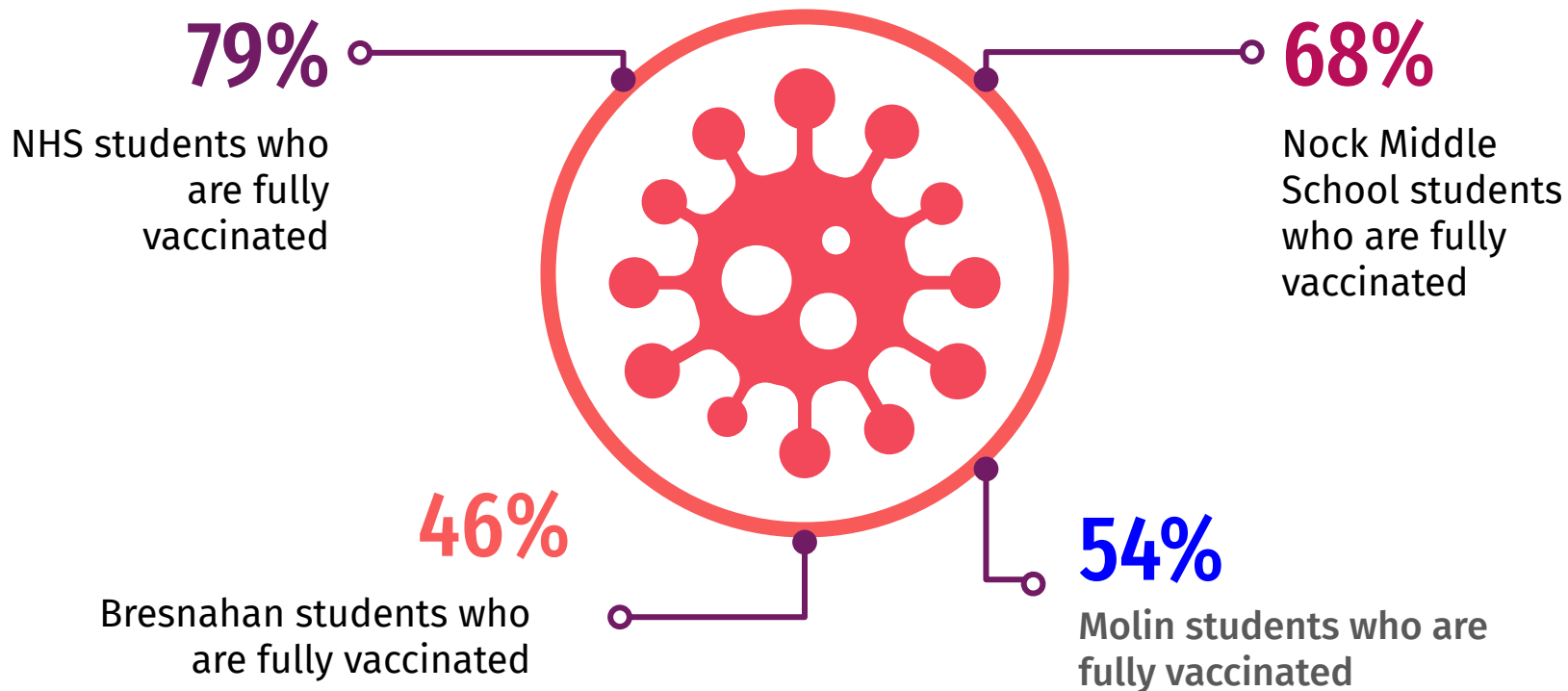
 **Hand Hygiene**

Ventilation 

Testing 

Sanitizing

COVID Vaccination Status



DESE COVID-19 Testing Recommendations

CURRENT

Symptomatic Testing

- Student/staff who have symptoms in school are tested by school nurse

Test and Stay

- Nurses conduct contact tracing.
- If student is identified as a close contact, school offers daily testing for 5 days.

UPDATED

Symptomatic Testing – **continued, no changes**

Test and Stay – **discontinued**

Weekly At-Home Testing – **added**

- Anticipated start dates:
January 24 (staff) - January 31 (students)
- DESE provides rapid antigen test kits for all staff and students who complete opt-in process.
- All staff and students take test on designated day each week.
- Positive test results are reported to school nurses.
- No contact tracing is required.

NPS COVID Testing Program



1

Symptomatic Testing

Symptomatic testing can be done for those who develop COVID-like symptoms during the school day. A negative test for a student experiencing only mild symptoms allows the student to safely return to class.

2

New DESE Home Testing

This new testing program allows for students and staff who opt in to receive a two-test kit every two weeks to test each week on a specified day.